



WILD LIFE - INDIA - BANDHAVGARH - 2N/3D

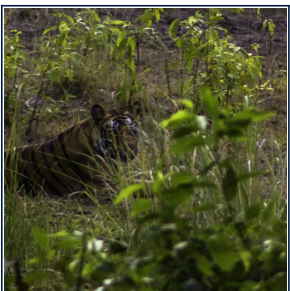


ITINERARY

Bandhavgarh National Park:

Bandhavgarh used to be the hunting reserve of the royal family of Rewa, though its history goes back two millenia. In caves you can still see paintings by the ancients. It is a retreat where history and nature meet.

Covering about 450 sq km, about half the park comprises sal forests, while mixed forests are found in the higher reaches of the hills. Stretches of bamboo and grasslands extend to the north. The main viewing area is still in the core of the Park with its 32 picturesque, wooded hills. An ancient fort up on a precipice, 800 metres high, dominates the Park.



This is where the famous white tigers of Rewa were discovered. Also to be seen here are nilgai, chousingha, chital, chinkara, wild boar, foxes, jackals, the jungle cat, ratel, hyena, porcupine, the rhesus macaque and the black-faced langur. About 150 species of birds are also found here and include the migratory birds that arrive in winter like the steppe eagle and various water-birds.

General Information

Best time of visit:

November-June (Park closes in July for the monsoons)

Nearest Town :
Umaria (30 km)

How to get there :
Rail-Umaria (30 km); Air-Khajuraho (210 km)

Bandhavgarh National Park Tour Package
2 Nights 3 Days

Day 1 :-

Meet our assistant on arrival at Katni proceed to Bandhavgarh National Park. After 3 hours drive reach the park hotel and relax for some time. In the evening we go for a wildlife safari in the park. We will enter through the Magadhi Gate and track the tiger. This is a good ecosystem with many tigress with cubs and dominant male. We explore the forests enjoy tiger sightings and see other animals and birds. We return at dusk and enjoy our dinner and nice sleep.

Day 2 :-

Start early morning at dawn for the Tala Gate for Jungle Safari in open Jeep with naturalist. We will look for tigers, leopards and deer species. We will go through some of the finest swampy grasslands like chur bohera and mountain forests. We will stop en route for a light breakfast and then return for lunch at the hotel. In the evening safari we will explore the forests of Penpatha looking for tigers and animals like sloth bear, wild dogs which require more efforts to discover. We return back to the hotel for an evening full of tribal performance at dinner time followed by sound sleep.

Day 3 :-

On this morning safari visit man made caves along the way. Step into ancient stables, Badhi Gufa, Sashiya and more. On this jeep safari we will also take an elephant ride if possible. This is a good way to see animals from close in the deep confines of the forests. After tiger safari have breakfast and then late lunch and then we proceed to Railway Station or Airport by taxi for next destination.

Package Inclusion

- Accommodation for 2 person for 2 nights/3days
- Meals as specified in the Itinerary (B - Breakfast, L - Lunch, D - Dinner)
- 3 Exclusive Jeep Safaris
- Transfer from Jabalpur - Bandhavgarh - Jabalpur

Package Exclusion

- Airfare
- Any kind of personal expenses, extra meals, starters & Drinks (Alcoholic, Mineral, Aerated etc)
- Any kind of optional tours
- Tips, Insurance, Laundry, Phone Calls, Guide Fee & Camera Fee
- Medical & Travel insurance
- Anything not mentioned under the category “ PACKAGE INCLUSIONS”

Note

- Jeep safaris are booked as per ticket availability
- Hotel confirmations are subject to availability. In case of unavailability, an alternate hotel in similar category will be booked and customer will be notified of the same.