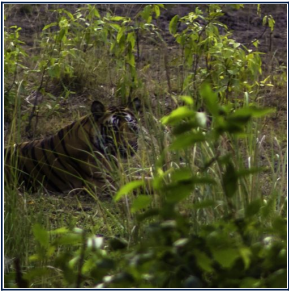




## **WILD LIFE - INDIA - BANDHAVGARH/KANHA - 7N/8D**



### **ITINERARY**

Bandhavgarh & Kanha National Park  
7 nights and 8 days  
Best time: November-May  
ITINERARY

Day 01: Delhi-Jabalpur-Bandhavgarh National Park  
Morning flight to Jabalpur at 0555 hours. Arrival at 0850 hours and drive to Bandhavgarh National Park (4 hours). Afternoon safari in the park (time permitting). Overnight in a Resort.

Day 02, 03: Bandhavgarh National Park  
Morning and afternoon jungle safari in jeeps. Overnight in a Resort.

Day 04: Bandhavgarh-Kanha NP  
Drive to Kanha National Park in the morning (5½ hours). Afternoon jungle safari. Overnight in a Resort.

Day 05, 06: Kanha NP  
Morning and afternoon jungle safari in jeeps. Overnight in a Resort.

Day 07: Kanha NP  
Morning and afternoon jungle safari in jeeps. Drive to Nagpur after the evening safari. Overnight in a hotel.

Day 08: Nagpur-Delhi  
Transfer to the airport. Tour Ends.

