



SOUTH KOREA - JEJU - 3N/4D



ITINERARY

Day 1 :

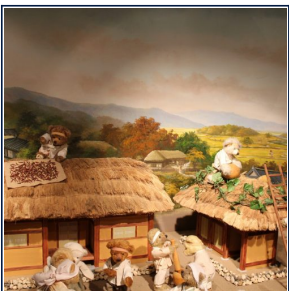
Arrival

Arrive in Jeju. Meet and greet at Jeju Airport by one of our tour guides who will transfer you to the hotel. Check in at hotel and the rest of the day is free at leisure. Overnight in Hotel.

Day 2 :

Sightseeing I

Buffet breakfast at hotel in the morning. After breakfast visit the Trick Art Museum, and Seongeup Folk Village. A Korean BBQ lunch will be served during tour. After lunch, see women divers, who dressed in black rubber diving suits, dive into the ocean water to gather various shellfish, seaweed, etc. without using any underwater diving equipment. Then, trek at Seongsan Ilchulbong Peak, this peak rose from under the sea in a volcanic eruption over 100,000 years ago, as well as Manjang Cave. Overnight in Hotel.



Day 3 :

Sightseeing II

Buffet breakfast at hotel in the morning. Followed next is a full day tour includes visits to Hallim Park and trek at Suweolbong. Korean style buffet lunch will be served. After lunch, visit the Spirited Garden, the world's largest botanical garden with a total landscape of approximately 39,700m². Continue visit to Althr Airfield, Sanbansan Mountain, Cheonjeyeon Waterfall, Seven Nymphs Bridge and Teddy bear Museum. Overnight in Hotel.

Day 4 :

Departure

Breakfast at hotel. Leisure till afternoon. Transfer to Jeju airport for your onward flight.